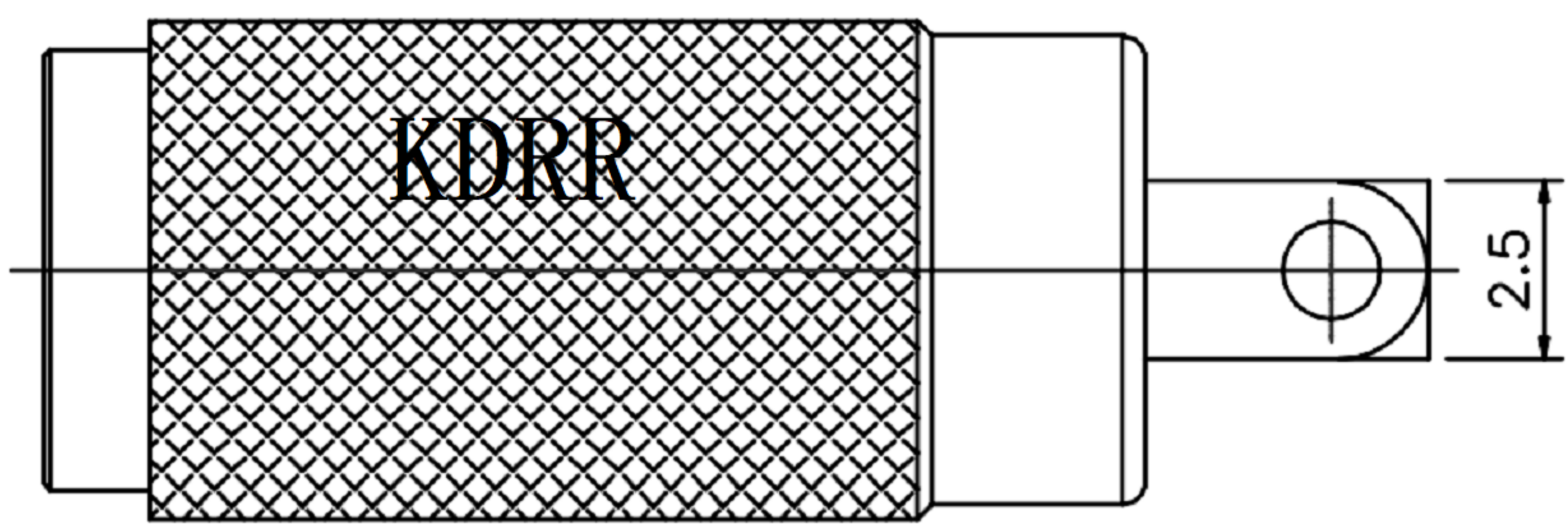


SPECIFICATION

- 1. Rating : DC 30V 0.5A ;
- 2. Contact resistance : $\leq 30\text{m}\Omega$;
- 3. Insulation resistance : $\geq 100\text{M}\Omega$;
- 4. Withstand voltage : 500VAC ;
- 5. Insertion and extraction force : 3-20N
- 6. life test : 5,000 cycles .



NO.	DESCRIPTION	QTY	MATERIAL	REMARK
4	CONTACT FOOT	1	Phosphor Bronze	Ag-Plated
3	CONTACT FOOT	1	Phosphor Bronze	Ag-Plated
2	CONTACT FOOT	1	Phosphor Bronze	Ag-Plated
1	HOUSING	1	PBT	

东莞市高迪电子有限公司
Dong Guan KDRR Electronic Switch Jack Co., Ltd.

TOLERANCE UNLESS OTHERWISE STATED :
 Up to 5 ±0.2
 Above 5 ~ 15 ±0.3
 Above 15 ~ 30 ±0.4
 Above 30 ~ 50 ±0.5
 Angle ±0.3°

3RD. ANGEL'S

UNITS MM

DRAWN BY:	DATE	MAT'L	TITLE	JACK
Jack Lu	06/19/17		MODLE	PHONE JACK
CHECKED BY:	DATE	FINISH	DWG NO.	GD-PJS-2570X
Jacky Chen	06/19/17		PART NO.	
APPROVED BY:	DATE	SCALE	SHEET NO. 1 of 1	
Tony Kao	06/19/17	1 : 1		

ITEM NO.	DESCRIPTION	DRAWN	DATE